

DEPARTMENT OF THE ARMY TECHNICAL MANUAL

GENERAL SUPPORT AND DEPOT MAINTENANCE REPAIR  
 PARTS AND SPECIAL TOOLS LIST FOR  
 TEST STAND, GYRO STABILIZED PLATFORM MT-4145/ASN-86

Headquarters, Department of the Army, Washington, D. C.

18 August 1971

TABLE OF CONTENTS

SECTION		Paragraph	Page
I.	<b>INTRODUCTION</b> . . . . .		
	Scope . . . . .	1-1	1-1
	General . . . . .	1-2	1-1
	Explanation of Columns . . . . .	1-3	1-1
	Special information . . . . .	1-4	1-3
	How to Locate Repair Parts . . . . .	1-5	1-3
	Abbreviations (Not Applicable) . . . . .	1-6	1-4
	Federal Supply Codes for Manufacturers . . . . .	1-7	1-4
	Recommendations for Maintenance Publication Improvements . . . . .	1-8	1-6
II.	<b>REPAIR PARTS FOR GENERAL SUPPORT AND DEPOT MAINTENANCE</b> . . . . .		2-1
III.	<b>SPECIAL TOOLS, TEST, AND SUPPORT EQUIPMENT FOR GENERAL SUPPORT AND DEPOT MAINTENANCE</b> . . . . .		3-1
IV.	<b>INDICES</b>		
	Federal Stock Number Cross-Reference to Index Number . . . . .		4-1
	Reference Number Cross-Reference to Figure and Item Number . . . . .		4-2
	Reference Designation Cross-Reference to Index Number . . . . .		4-3
	Federal Stock Number Cross-Reference to Figure and Item Number . . . . .		4-4
	Figure and Item Number Cross-Reference to Index Number . . . . .		4-5

LIST OF ILLUSTRATIONS

Number	Title	Page
1	Test Stand, Gyro Stabilized Platform MT-4145/ASN-86 . . . . .	3-2
2	Blower . . . . .	3-3
3	Electrical Power Cable Assembly and Flexible Air Hose . . . . .	3-5
4	Mounting Fixture . . . . .	
5	Special Tools, Test and Support Equipment . . . . .	3-6

DIRECT SUPPORT, GENERAL SUPPORT, AND DEPOT MAINTENANCE REPAIR PARTS  
AND SPECIAL TOOLS LIST

Section I. INTRODUCTION

1-1. Scope.

This manual lists repair parts, special tools, and test and support equipment required for the performance of general support and depot maintenance of the Test Stand, Gyro Stabilized Platform MT-4145/ASN-86. Direct support maintenance is not applicable to this manual, although tabular headings indicate same for consistency with associated manuals.

1-2. General.

This Repair Parts and Special Tools list is divided into the following sections:

a. Repair Parts - - Section II. A list of repair parts authorized for the performance of maintenance at the general support and depot level in the same sequence as the Selection Work Sheet. Figure and item numbers are not in sequential order.

b. Special Tools, Test, and Support Equipment - Section III. A list of special tools, test, and support Equipment authorized for the performance of maintenance at the general support and depot level.

c. Indices - Section IV. Conversion of numbers and indices is explained as follows:

(1) Index - Federal Stock Number to Index Number, A list of Federal stock numbers, in ascending numerical sequence, cross-referenced to the Repair Parts list index number.

(2) Index - Reference Number to Figure and Item Number. A list of reference numbers (part numbers and manufacturers codes), in ascending alphanumeric sequence, cross-referenced to figure and item number.

(3) Index - Reference Designation to Index Number, A list of Reference Designations (RD), in ascending alphanumeric sequence, cross-referenced to the Repair Parts list index number.

(4) Index - Federal Stock Number to Figure and Item Number. A list of Federal stock numbers, in ascending numerical sequence, cross-referenced to the illustration figure number and item number.

(5) Index - Figure and Item Number to Index Number. A list of figure and item numbers, each in ascending numerical sequence, cross-referenced to the Repair Parts list index numbers.

1-3. Explanation of Columns.

The following provides an explanation of columns in the tabular lists in Sections II and III.

a. Source, Maintenance, and Recoverability (SMR) Codes, Column 1.

(1) code, indicates the selection status and source for the listed item. Source codes are:

Code	Explanation
A	Applies to assemblies which are not procured or stocked as such but are made up of two or more units, each of which carry individual stock numbers and descriptions and are procured and stocked and can be assembled by units 'at indicated maintenance categories
AH	Applies to repair parts requiring assembly at a category higher than that authorized to replace the part
G	Applies to major assemblies that are procured with Procurement of Electronics and Missiles, Army (PEMA) funds for initial issue only to used as exchange assemblies at Direct Support Unit (DSU) and General Support Unit (GSU) level. These assemblies will not be stocked above DSU and GSU level or returned to depot level

- F** Applies to repair parts which are stocked in or supplied from the General Support Activity/Direct Support Activity (GSA/DSA), or Army supply system, and authorized for use at indicated maintenance categories
- X2** Applies to repair parts which are not stocked. The indicated maintenance category requiring such repair parts will attempt to obtain through cannibalization; if not obtainable through cannibalization, such repair parts will be requisitioned with supporting justification through normal supply channels

(2) Maintenance code, indicates the lowest category of maintenance authorized to install the listed item. The maintenance codes are:

Code	Explanation
O	Organizational maintenance
H	General support maintenance
D	Depot maintenance

(3) Recoverability code, indicates whether unserviceable items should be returned for recovery or salvage. Items not coded are expendable. Recoverability codes are:

Code	Explanation
R	Applies to repair parts and assemblies which are economically repairable at DSU and GSU activities and normally are furnished by supply on an exchange basis
T	Applies to high dollar value recoverable repair parts which are subject to special handling and are issued on an exchange basis. Such repair parts normally are repaired or overhauled at depot maintenance

b. The second line of column 1 is a cross-reference to the index number of the repair part as it appears in the Selection Work Sheet (SWS). The index number is explained as follows:

A001	Denotes original line entry in the SWS
A001M	"M" denotes a modified or changed line item in the SWS
A001A	"A" and other subsequent letters denotes additional line items in the SWS

c. Federal Stock Number, Column 2. This column indicates the Federal stock number assigned to the item and will be used for requisitioning purposes.

d. Description, Column 3. This column indicates the Federal item name of the item required. A part number or other reference number is followed by the applicable five-digit Federal supply code for manufacturers in parentheses.

e. Unit of Measure (U/M), Column 4. A two-character alphabetic abbreviation indicating the amount or quantity of the item upon which the allowances are based; e.g., EA (each).

f. Quantity Incorporated in Unit, Column 5. This column indicates the quantity of the item used in any one assembly. An "AR" appearing in this column in lieu of a quantity indicates that a definite quantity cannot be indicated; e.g., shims, spacers, etc.

g. 30-Day GS Maintenance Allowance, Column 7. Allowances in GS column are for GS maintenance only.

(1) The allowance columns are divided into three subcolumns. Indicated in each subcolumn, opposite the first appearance of each item, is the total quantity of items authorized for the number of equipments supported. Subsequent appearances of the same item will have the letters "REF" in the applicable allowance columns. Items authorized for use as required but not for initial stockage are identified with an asterisk in the allowance column.

(2) The quantitative allowances for GS level of maintenance will represent initial stockage for a 30-day period for the number of equipments supported.

(3) Determination of the total quantity of parts required for maintenance of more than 100 of these equipments can be accomplished by converting the equipment quantity to a decimal factor by placing a decimal point before the next to last digit of the number to indicate hundredths, and multiplying the decimal factor by the parts quantity authorized in the 51-100 allowance column. Example, authorized allowance for 51-100 equipments is 40; for 150 equipments multiply 40 by 1.50 or 60 parts required.

h. 1-Year Allowance Per 100 Equipments Contingency Planning Purposes, Column 8. This column indicates opposite the first appearance of each item the total quantity required for distribution and contingency planning purposes. The range of items indicates total quantities of all authorized items required to provide for adequate support of 100 equipments for 1 year.

i. Depot Maintenance Allowance Per 100 Equipments, Column 9. This column indicates opposite the first appearance of each item, the total quantity authorized for depot maintenance of 100 equipments. Subsequent appearances of the same item will have the letters "REF" in the allowance column.

j. Illustration, Column 10. This column indicates the figure number of the illustration in which the item is shown, and the number used to reference the item in the illustration.

k. Reference Designation, Column 11. This column indicates the reference designation symbol of each item in the equipment.

**1-4. Special Information.**

a. Repair parts mortality has been based on 100 equipments operating 65 hours a month for 1 year.

b. The basis of issue for authorized special tools, test and support equipment is the number of end items of equipment supported and the number of maintenance personnel allocated to perform the required maintenance operations as follows: Two sets of Special Tools and Test Equipment supporting twenty-three AN/ASN-86 Inertial Navigation Sets.

c. The following publications pertain to Test Stand, Gyro Stabilized Platform MT-4145/ASN-86 and its components.

TM 11-6625-2443-12	Operator's and Organizational Maintenance Manual for Test Stand, Gyro Stabilized Platform MT-4145/ASN-86
TM 11-6625-2443-15	Operator, Organizational, Direct Support, General Support, and Depot Maintenance for Test Stand, Gyro Stabilized Platform MT-4145/ASN-86
TM 11-6625-2443-45	General Support and Depot Maintenance Manual for Test Stand, Gyro Stabilized Platform MT-4145/ASN-86
TM 11-6625-2443-20P	Organizational Maintenance Repair Parts and Special Tools List for Test Stand, Gyro Stabilized Platform MT-4145/ASN-86

d. Items phantomed on illustrations are not available as a separate item of supply. When need for such hardware exists, the repair part which is attached will be requisitioned.

**1-5. How to Locate Repair Parts**

a. When the Federal stock number or reference number is unknown:

(1) First. Determine the assembly within which the repair part belongs.

(2) Second. Using list of illustrations, find the illustration covering the assembly to which the repair part belongs.

(3) Third. Identify the repair part on the illustration and note the figure and item number of the repair part.

(4) Fourth. Using the Figure and Item Number Index, locate the sequence index number of the repair part.

(5) Fifth. Refer to the sequence index number in the Repair Parts list for the Federal stock number or reference number.

b. When the Federal stock number or reference number is known:

(1) First. Using either of the indices of Federal Stock Numbers, find the Federal stock number. These indices are in ascending numerical sequence by Federal stock number, cross-referenced to either the Repair Parts list index number, or to the illustration figure and item number.

(2) Second. Using the index of Reference Numbers, find the applicable number. This index is in ascending alphanumeric sequence by reference number, cross-referenced to the Repair Parts list index number.

(3) Third. Using the Repair Parts list, find the assembly of the repair part and the illustration figure and item number, or the index number, as referenced in the indices of Federal Stock Numbers or Reference Numbers.

c. When the RD is known:

(1) First. Using the Reference Designation Index, find the RD. This index is in ascending alphanumeric sequence, cross-referenced to the index number of the Repair Parts list. The next higher assembly of any component may be determined by using the RD Index. Identify the RD of the part in question and, by following the upward progression of this index, the sequence number of the next higher assembly part number may be identified. The RD is compiled as follows:

<u>1</u>	<u>A1</u>	<u>A1</u>	<u>MPI</u>
Unit No.	Assembly Letter and No.	Subassembly Letter and No.	Component Letter and No.

(2) Second. Using the Repair Parts list, find the assembly of the repair part and the illustration figure and item number.

d. When the Figure and Item Number are known:

(1) First. Identify the repair part on the applicable figure.

(2) Second. Cross-reference to the individual indices for information required.

1-6. Abbreviations. Not applicable.

1-7. Federal Supply Codes for Manufacturers.

Code	Manufacturer
00124	Veeco Instruments, Inc. Terminal Drive Plainview Long Island, N. Y. 11803
01884	Dearborn Electronics, Inc. P.O. Box 530 Orlando, Fla. 32802
03038	Long-Lok Corp. 1425 Gateway East Bldg. Los Angeles, Calif. 90067
04353	Plastiflex Co. 1237 W. Arbor Vitae St. Inglewood, Calif.

06481 Litton Systems, Inc.  
Guidance and Control Systems Div.  
5500 Canoga Ave.  
Woodland Hills, Calif. 91364

13636 Barry Controls  
Western Div. of Barry Wright Corp.  
2323 N. Valley St.  
Burbank, Calif. 91505

20566 Engis Equipment Co.  
8035 Austin Ave.  
Morton Grove, Ill. 60053

23328 Walter, G. UND Co.  
Muehlacker-Erlenbach; Germany

59730 Thomas and Betts Co., The  
36 Butler St.  
Elizabeth, N.J. 07207

71286 Camloc Div. Rex Chainbelt, Inc.  
22 Spring Valley Rd.  
Paramus, N.J. 07652

75237 Kaynar Co., The, Div. of  
Reiner Industries, Inc.  
7875 Telegraph Road  
Pico Rivera, Calif. 90660

75915 Littelfuse, Inc.  
800 E. Northwest Hwy.  
Des Plaines, Ill. 60016

78189 Illinois Tool Works, Inc.  
Shakeproof Div.  
St. Charles Road  
Elgin, Ill. 60126

80663 Army Electronics Command  
Procurement and Production Directorate  
Fort Monmouth, N.J. 07703

80101 General Electronics, Inc.  
Patterson, N.J.

80205 National Aerospace Standards Committee  
Aerospace Industries Association of America, Inc.  
1725 De Sales N.W.  
Washington, D.C.

81349 Military Specifications Promulgated  
Standardization Div.  
Directorate of Logistic Services, DSA

82877 Rotron, Inc.  
7-9 Hasbrouck Lane  
Woodstock, N.Y. 12498

83330 Smith, Herman H., Inc.  
812 Snediker Ave.  
Brooklyn, N.Y. 11207

86928 Seastrom Mfg. Co., Inc.  
701 Sonora Ave.  
Glendale, Calif. 91201

- 88044 Aeronautical Standards Group  
Dept. of Navy and Air Force  
Silver Springs, Md.
- 88245 Litton Precision Products, Inc.  
USECO Div. Litton Industries  
13536 Saticoy St.  
Van Nuys, Calif. 91409
- 93508 Shell Oil Co.  
Shell Bldg.  
Houston, Texas 77002
- 95987 Weckesser Co., Inc.  
4444 West Irving Park Rd.  
Chicago, Ill. 60641
- 96655 California Plasteck, Inc.  
18415 Hart St.  
Reseda, Calif. 91335
- 98906 Military Standards Promulgated by  
Standardization Div.  
Directorate of Logistic Services, DSA

**1-8. Recommendations for Maintenance Publication Improvements.**

Report of error, omissions, and recommendations for improving this publication by the individual user is encouraged. Reports should be submitted on DA Form 2028 (Recommended Changes to DA Publications) and forwarded direct to Commanding General, U.S. Army Electronics Command, Attn: AMSEL-ME-NMP-AS, Fort Monmouth, New Jersey 07703.

SECTION II REPAIR PARTS FOR DIRECT SUPPORT, GENERAL SUPPORT, AND AND DEPOT MAINTENANCE

(1) NBSK CODE	(2) FEDERAL STOCK NUMBER	(3) DESCRIPTION REFERENCE NUMBER, NWS, CODE	(4) UNITS OF MEAS	(5) QTY REQ'D	(6) 30-DAY DE MANT ALLOWANCE			(7) 90-DAY DE MANT ALLOWANCE			(8) 1 YR AVL PER REQ	(9) DEPT AVL PER REQ	(10) ILLUSTRATION FIGURE & ITEM NO	(11) REFERENCE DESIGNATION
					(6) 1 30	(6) 21 30	(6) 31 30	(7) 1 30	(7) 21 30	(7) 31 30				
G O R A001	6625-522-3740	TEST STAND, CYND STABILIZ'D PLATFORM RT-4145/450-20 244230 (06481)	EA	1								1 - 1	1	
A M R A002	.4140	COVER 247945 (06481)	EA	1								1 - 16	1B1	
P M A003	6625	MOUNT, BALL 372-1W (13636)	EA	4			*	2	2	27	16	1 - 20	1B1H4	
X2 M A004	5305-054-4676	SCREW, MACHINE NS51957-51 (96906)	EA	4								1 - 17	1B1H4	
X2 M A005	5365	SPACER 8526 (83330)	EA	4								1 - 19	1B1H4	
X2 M A006	5310	WASHER, FLAT 5716-30-32 (84928)	EA	4								1 - 10	1B1H4	
P M A007A	5310	CAPACITOR, FIXED, PLASTIC DIELECTRIC L110-3708 (01884)	EA	1			*	2	2	12	5	2 - 15	1B1C1	
X2 M A008	5340-550-7867	CLAMP, LOOP 3-10-4-128 (95887)	EA	1								2 - 43	1B1H1	
X2 M A009	5310+934-5740	NUT, FLAIN, HEXAGON NS35649-244 (96906)	EA	1								2 - 44	1B1H1H1	
X2 M A010	5305-054-5450	SCREW, MACHINE NS51957-16 (96906)	EA	1								2 - 48	1B1H1H1	
X2 M A011	5310-672-2178	WASHER, CABLE CLAMP 06-128 (95887)	EA	1								2 - 47	1B1H1H1	
X2 M A012	5310-781-1349	WASHER, FLAT NS15795-804 (96906)	EA	2								2 - 46	1B1H1H2	
X2 M A013	5310-933-2118	WASHER, LOCK NS35330-135 (96906)	EA	1								2 - 45	1B1H2H1	
X2 M A014	5340-040-9028	CLIP, SPRING TENSION NS17160-29 (96906)	EA	1								2 - 16	1B1H2	
X2 M A015	5320-754-0022	RIVET, SOLID NS20470AD4-5 (96906)	EA	2								2 - 17	1B1H2H2	
P M A016	5935-901-1567	CONNECTOR, RECEPTACLE, ELECTRICAL NS3122E12-3P (96906)	EA	1			*	2	2	12	5	2 - 18	1B1J1	
X2 M A017	5310-934-9748	NUT, FLAIN, HEXAGON NS35649-244 (96906)	EA	4								2 - 19	1B1J1H4	
X2 M A018	5305-056-9961	SCREW, MACHINE NS24693C4 (96906)	EA	4								2 - 22	1B1J1H4	
X2 M A019	5310-723-9676	WASHER, FLAT NS4620C4L (80205)	EA	4								2 - 21	1B1J1H4	
X2 M A020	5310-933-0118	WASHER, LOCK NS35330-135 (96906)	EA	4								2 - 20	1B1J1H4	
X2 M A021	6605	COVER 247945-98 (06481)	EA	1								2 - 2	1B1MP1	
X2 M A022	5305-054-6671	SCREW, MACHINE NS51957-16 (96906)	EA	6								2 - 3	1B1MP1H6	
X2 M A023	5310-000-5970	WASHER, FLAT NS15795-807 (96906)	EA	6								2 - 4	1B1MP1H6	
P M A024	.4140	FAN, CENTRIFUGAL /AS6-0CLOCKBLASTCM/ DRFP-NS202-460 (82877)	EA	1			*	2	2	12	5	2 - 11	1B1B1	



SECTION II REPAIR PARTS FOR DIRECT SUPPORT, GENERAL SUPPORT AND DEPOT MAINTENANCE

(1) SMM CODE INDEX NO.	(2) FEDERAL STOCK NUMBER	(3) DESCRIPTION REFERENCE NUMBER & MFR CODE USABLE IN CODE	(4) UNIT OF MEAS.	(5) QTY REQ'D	(6) REPAIR SUPPORT ALLOWANCE			(7) GENERAL SUPPORT ALLOWANCE			(8) ISSUE PER 100 ITEMS	(9) REPAIR ALLOWANCE PER 100 ITEMS	(10) ILLUSTRATION FIGURE & ITEM NO.	(11) REFERENCE DESIGNATION
					(a) P-20	(b) 25-60	(c) 87-100	(d) P-20	(e) 25-60	(f) 87-100				
X2 H A025	5310-870-9518	NUT, EXTENDED WASHER, HEXAGON NAS1291C04M (80205)	EA	4								2 - 12	1818144	
X2 H A026	5305-066-7327	SCREW, MACHINE MS24493C20 (96906)	EA	4								2 - 14	1818144	
X2 H A027	5870-880-5976	WASHER, FLAT MS15795-804 (96906)	EA	4								2 - 13	1818144	
P O A028	5920-299-9862	FUSOR, CARTRIDGE 3E300B (75915)	EA	1				3	5	2	6	11	2 - 24	1818141
P H A029	5920-280-4101	FUSOR, ODER 3E2012 (75915)	EA	1				*	2	2	12	5	2 - 25	1818141
X2 H A030	6685	WASHER 247945-99 (06481)	EA	1									2 - 53	1818142
X2 H A031	5510-003-2134	NUT, SELF-LOCKING, PLATE NF6000-8 (79237)	EA	6									4 - 50	1818143
X2 H A032	5325-117-0815	RIVET, SGL ID MS20426A03-4 (96906)	EA	12									2 - 52	1818143
X2 H A033	5310-655-7513	NUT, SELF-LOCKING, PLATE NF1001-08 (79237)	EA	4									2 - 5	1818143
X2 H A034	5320-584-0612	RIVET, SGL ID MS20426A03-6 (96906)	EA	8									2 - 6	1818143
X2 H A035	9905	PLATE, IDENTIFICATION 244861-33 (06481)	EA	1									2 - 1	1818143
P H A036	5325-653-1712	RECEPTACLE, TURNLOCK FASTENER 3E2-12S (71286)	EA	4				*	2	2	16	4	2 - 49	1818145
X2 H A037	5320-117-6938	RIVET, SGL ID MS20426A03-4 (96906)	EA	8									2 - 50	1818146
X2 H A038	6605	SCREEN 247945-96 (06481)	EA	1									2 - 7	1818146
X2 H A039	5310-845-2359	NUT, EXTENDED WASHER, HEXAGON NAS1291C04M (80205)	EA	8									2 - 8	1818146
X2 H A040	5305-054-5650	SCREW, MACHINE MS51957-15 (96906)	EA	8									2 - 10	1818146
X2 H A041	5310-782-1349	WASHER, FLAT MS15795-804 (96906)	EA	16									2 - 9	1818146
P H A042	5930-984-9383	SWITCH, TOGGLE MS25307-222 (96906)	EA	1				*	2	2	12	5	2 - 23	1818146
X2 H A043	5940	TERMINAL, LUG 2006-04-00LOCK (78189)	EA	1									2 - 38	1818146
X2 H A044	5310-934-9748	NUT, PLAIN, HEXAGON MS35649-244 (96906)	EA	1									2 - 39	1818146
X2 H A045	5305-054-5650	SCREW, MACHINE MS51957-15 (96906)	EA	1									2 - 42	1818146
X2 H A046	5310-732-1349	WASHER, FLAT MS15795-804 (96906)	EA	2									2 - 41	1818146
X2 H A047	5310-933-8118	WASHER, LOCK MS35338-135 (96906)	EA	1									2 - 40	1818146
X2 H A048	5940-087-5535	TERMINAL, STUD 1451A (88245)	EA	1									2 - 26	1818146
X2 H A049	5305-054-5647	SCREW, MACHINE MS51957-13 (96906)	EA	1									2 - 27	1818146

SECTION II REPAIR PARTS FOR DIRECT SUPPORT, GENERAL SUPPORT AND DEPOT MAINTENANCE (CONTINUED)

(1) NOMENCLATURE SYMBOL	(2) FEDERAL ACQUISITION REGISTRATION NUMBER	(3) DESCRIPTION USDA/DA/DAI	(4) UNIT OF MEASURE	(5) QUANTITY REQUIRED	(6) DIRECT SUPPORT ALLIANCE			(7) GENERAL SUPPORT ALLIANCE			(8) DEPOT MAINTENANCE ALLIANCE	(9) DEPOT MAINTENANCE ALLIANCE	(10) REQUISITION CATEGORY	(11) REFERENCE SYMBOL
					(a) 11-66	(b) 11-67	(c) 11-68	(a) 11-66	(b) 11-67	(c) 11-68				
X2 H A050	5310-782-1349	WASHER, FLAT MS15795-804 (96904)	EA	1									2 - 28	2B1E1M1
X2 H A051	5310-933-8118	WASHER, FLAT MS35336-135 (96904)	EA	1									2 - 29	2B1E1M1
X2 H A052	5940-087-5535	REPAIRMAN, STUB 2452A (96245)	EA	1									2 - 30	2B1E1M1
X2 H A053	5305-054-5647	SCREW, MACHINE MS15957-13 (96904)	EA	1									2 - 31	2B1E2M1
X2 H A054	5310-782-1340	WASHER, FLAT MS15795-804 (96904)	EA	1									2 - 32	2B1E2M1
X2 H A055	5310-933-8118	WASHER, FLAT MS35336-135 (96904)	EA	1									2 - 33	2B1E2M1
X2 H A056	5940-087-5535	REPAIRMAN, STUB 2452A (96245)	EA	1									2 - 34	2B1E3
X2 H A057	5305-054-5647	SCREW, MACHINE MS15957-13 (96904)	EA	1									2 - 35	2B1E3M1
X2 H A058	5310-782-1349	WASHER, FLAT MS15795-804 (96904)	EA	1									2 - 37	2B1E3M1
X2 H A059	5310-933-8110	WASHER, FLAT MS35336-135 (96904)	EA	1									2 - 36	2B1E3M1
PH R A060	6150	CABLE ASSEMBLY, POWER, ELECTRICAL 247964 (06481)	EA	1									1 - 15	1M1
X2 H A061	5975	BAND, MARKER, CABLE 244937-3 (06481)	EA	1									3 - 7	1M1MP1
X2 H A062	5975	BAND, MARKER, BLANK 495-50981-3-0 (59730)	EA	1									3 - 9	1M1MP1MP1
X2 H A063	5975	STRAP, CABLE, ADJUSTABLE TV4-0 (59730)	EA	2									3 - 8	1M1MP1MP2
X2 H A064	5975	BAND, MARKER, CABLE 244937-210 (06481)	EA	2									3 - 4	1M1MP2
X2 H A065	5975	BAND, MARKER, BLANK 495-50981-3-0 (59730)	EA	1									3 - 6	1M1MP2MP1
X2 H A066	5975	STRAP, CABLE, ADJUSTABLE TV4-0 (59730)	EA	2									3 - 5	1M1MP2MP2
X2 H A067	5975	BAND, MARKER, CABLE 244937-217 (06481)	EA	1									3 - 1	1M1MP3
X2 H A068	5975	BAND, MARKER, BLANK 495-50981-3-0 (59730)	EA	1									3 - 3	1M1MP3MP1
X2 H A069	5975	STRAP, CABLE, ADJUSTABLE TV4-0 (59730)	EA	2									3 - 2	1M1MP3MP2
PH A070	6145	CABLE, ELECTRICAL C0-03M0F3-16-036 (01349)	EA	1				2	2	19	10		3 - 12	1M1M1
PH A071	5935-902-2364	CONNECTOR, PLUG, ELECTRICAL MS3126F12-3P (96906)	EA	1				2	4	12	5		3 - 10	1M1P1
PH A072	5906-765-5991	CONNECTOR, PLUG, ELECTRICAL MS3126F12-3S (96906)	EA	1				2	2	12	5		3 - 11	1M1P2
PH R A073	4720	HOSE, AIR, FLEXIBLE 247964 (06481)	EA	1				4	4	4	1		1 - 14	1M1P1
X2 H A074	4730	ADAPTER 247964-99 (06481)	EA	1									3 - 19	1M1P1P1

SECTION II REPAIR PARTS FOR DIRECT SUPPORT, GENERAL SUPPORT, AND DEPOT MAINTENANCE (CONTINUED)

(1) NAE CODE INDEX NO.	(2) FEDERAL STOCK NUMBER	(3) DESCRIPTION REFERENCE NUMBER & AFR CODE	(4) UNIT OF MEAS.	(5) QTY INC TO UNIT	(6) 30 DAY QS MAINT. ALLOWANCE			(7) 90 DAY QS MAINT. ALLOWANCE			(8) 1 YR RES TO REPAIR CLAMP	(9) DEPOT SUPPORT ALLOW RES TO REPAIR CLAMP	(10) ALLIANCE PROGRAM NO.	(11) REFERENCE DESCRIPTION
					(a) F.20	(b) 21.50	(c) 51.100	(d) 1.25	(e) 21.50	(f) 51.100				
X2 H A079	4730	CLAMP, HOSE E330-036 (00124)	EA	2									3 - 08	IMP141
X2 H A076	4730	FLANGE 247964-99 (06481)	EA	1									3 - 15	IMP142
X2 H A077	5905-054-9648	SCREW, MACHINE MS56957-14 (96906)	EA	8									3 - 16	IMP143
X2 H A078	5330	GASKET 247964-97 (06481)	EA	1									3 - 17	IMP142
X H A079	4720	HOSE, AIR, VACUUM 2-2207 (06353)	EA	1				*	2	2	15	5	3 - 20	IMP143
X2 H A080H	5325	STUD, FURNLOCK FASTENER 28511-9 (71206)	EA	4									3 - 23	IMP143
X2 H A081H	9910	WASHER, LOCK 28510-6 (71206)	EA	4									3 - 14	IMP144
X2 H A082	6606	MOUNTING FEATURE 247960 (06481)	EA	1									1 - 6	IMP2
X2 H A083	5306	BOLT 247963-1 (06481)	EA	6									1 - 03	IMP216
X2 H A084	5310-579-0571	NUT, FLANG, HEXAGON AN3450616 (88044)	EA	6									1 - 7	IMP216
X2 H A085	5365	SPACER 247967-1 (06481)	EA	6									1 - 9	IMP216
X2 H A086	5310-167-0804	WASHER, FLAT AN960616 (88044)	EA	6									1 - 8	IMP216
X2 H A087	6605	ARM, LOCK 243743 (06481)	EA	1									4 - 4	IMP216F1
X2 H A088	6605	ARM, LOCK 243744 (06481)	EA	2									4 - 15	IMP216F2
X2 H A089	6605	BLOCK, MOUNTING 243745 (06481)	EA	1									4 - 7	IMP216F3
X2 H A090	5305-988-7604	SCREW, MACHINE MS16995-29 (96906)	EA	2									4 - 3	IMP216F42
X2 H A091	5310-069-5291	WASHER, FLAT NAS620C8 (80205)	EA	2									4 - 10	IMP216F42
X2 H A092	5310-933-8119	WASHER, LOCK MS35338-137 (96906)	EA	2									4 - 9	IMP216F42
X2 H A093	6605	BLOCK, MOUNTING 243742 (06481)	EA	2									4 - 16	IMP216F4
X2 H A094	5305-688-2020	SCREW, MACHINE MS35308-305 (96906)	EA	4									4 - 17	IMP216F44
X2 H A095	5310-764-9564	WASHER, FLAT NAS620C416L (80205)	EA	4									4 - 19	IMP216F44
X2 H A096	5310-933-8121	WASHER, LOCK MS35338-139 (96906)	EA	4									4 - 18	IMP216F44
X2 H A097	6605	CHASSIS 247960-99 (06481)	EA	1									4 - 21	IMP216F5
X2 H A098	5315-923-9446	PIN, SPRING MS51923-446 (96906)	EA	2									4 - 21	IMP216F1
X2 H A099	5315-825-1207	PIN, STRAIGHT, HEADLESS MS16555-627 (96906)	EA	2									4 - 20	IMP216F2

SECTION II REPAIR PARTS FOR DIRECT SUPPORT, GENERAL SUPPORT, AND DEPOT MAINTENANCE (CONTINUED)

(1) NATIONAL STOCK NUMBER UNLESS SHOWN OTHERWISE	(2) REPAIR PARTS SYMBOLS	(3) DESCRIPTION REPAIR PARTS NUMBER AND UNIT CODE	(4) UNIT OF MEASURE	(5) QUANTITY REQUIRED	(6) DIRECT SUPPORT ALLOWANCE			(7) GENERAL SUPPORT ALLOWANCE			(8) DEPOT MAINTENANCE ALLOWANCE	(9) REPAIR PARTS SYMBOLS	(10) REPAIR PARTS SYMBOLS	
					(a) N 200	(b) Z 200	(c) R 200	(a) N 200	(b) Z 200	(c) R 200				
42 M 4100	5315-753-8386	WASHER, STRAIGHT, HEADLESS MS 15255-944 (949066)	EA	3								4 - 3	IMP2M3	
42 M 4101	5305	SCREW, WOODScrew Z43746 (064811)	EA	3				*	*	2	6	3	4 - 5	IMP2M3
42 M 4102	5305	SCREW, CAPScrew MS 40433 (064811)	EA	3									4 - 1	IMP2M3
42 M 4103	5305	SCREW, DRILLScrew Z43747 (064811)	EA	2									4 - 12	IMP2M3
42 M 4104	5305	SCREW, DRILLScrew LP574740-200 (030397)	EA	3									4 - 0	IMP2M4
42 M 4105	5310	WASHER, DRILLScrew Z43748 (064811)	EA	2									4 - 14	IMP2M5
42 M 4106	5340-937-0620	WASHER 5710-063 (064811)	EA	4									4 - 13	IMP2M9
42 M 4107	5310-933-8121	WASHER, LOCK MS 35330-139 (949066)	EA	3									4 - 2	IMP2M10
42 M 4108	6685	REINFORCING PLATE Z43749 (064811)	EA	1									1 - 30	IMP3
42 M 4109	6685	REINFORCING PLATE Z43750-96 (064811)	EA	1									1 - 31	IMP3MP1
42 M 4110	5310	NUT Z43751-93 (064811)	EA	9									1 - 32	IMP3MP1M9
42 M 4111	5305	SCREW Z43752-94 (064811)	EA	3									1 - 34	IMP3MP1M3
42 M 4112	5310-551-0989	WASHER, FLAT MS 4042426 (064811)	EA	9									1 - 33	IMP3M1M9
42 M 4113	9905	PLATE, IDENTIFICATION Z43757-5 (064811)	EA	1									1 - 2	IMP4
42 M 4114	5305-054-5667	SCREW, MACHINE MS 51957-13 (949066)	EA	4									1 - 3	IMP4M4
42 M 4115	5310-057-0573	WASHER, FLAT MS 40404 (064811)	EA	4									1 - 5	IMP4M4
42 M 4116	5310-933-8118	WASHER, LOCK MS 35330-135 (949066)	EA	4									1 - 4	IMP4M4
42 M 4117	6625	SUPPORT, BLOWER Z43500 (064811)	EA	1									1 - 21	IMP5
42 M 4118	5305-720-8245	SCREW, MACHINE MS 35300-309 (949066)	EA	4									1 - 22	IMP5M4
42 M 4119	5310-582-5677	WASHER, FLAT MS 15795-010 (949066)	EA	4									1 - 24	IMP5M4
42 M 4120	5310-933-8121	WASHER, LOCK MS 35330-139 (949066)	EA	4									1 - 23	IMP5M4
42 M 4121	6405	CHASSIS Z43500-99 (064811)	EA	1									1 - 29	IMP5MP1
42 M 4122	6605	SUPPORT Z43500-98 (064811)	EA	2									1 - 25	IMP5MP2
42 M 4123	5310-845-5998	NUT, EXTENDED WASHER, HEXAGON MS 129100M (06205)	EA	6									1 - 26	IMP5MP2M6
42 M 4124	5305	SCREW, ASSEMBLED, WASHER 3675-0R-3520L (94655)	EA	6									1 - 28	IMP5MP2M6

TM11-6625-2443-45P

SECTION V. REPAIR PARTS FOR DIRECT SUPPORT, GENERAL SUPPORT, AND DEPOT MAINTENANCE (CONTINUED)

(1) SMP CODE	(2) REFURB SPEC NUMBER	(3) DESCRIPTION REFERENCE NUMBER & MFR CODE	(4) UNIT OF MEAS	(5) QTY REQD UNIT	(6) 20-GYR MAINT ALLOWANCE			(7) 30-GYR MAINT ALLOWANCE			(8) FYR ALW PER EQUR	(9) DEPOT MAINT ALW PER EQUR	(10) ILLUSTRATION FIGURE & FORM NO	(11) REFERENCE DESIGNATION
					(a) P-20	(b) Z-30	(c) SF-100	(a) P-20	(b) Z-30	(c) SF-100				
42 44 4425	5310-880-5978	WASHER, FLAT 449608-16 (9608)	EA	6								U - 27	449608	
42 44 4426	6605	WASHER, ROTARY FLAT 4452306 (23328)	EA	1								U - 11	4496	
42 44 4427	5305-938-0798	SCREW, MACHINE 4452308-44 (9608)	EA	2								U - 12	449602	
42 44 4428	5310-167-0806	WASHER, FLAT 449608-16 (88044)	EA	2								U - 13	449602	

SECTION III. SPECIAL TOOLS TEST AND SUPPORT EQUIPMENT FOR DIRECT SUPPORT, GENERAL SUPPORT, AND DEPOT MAINTENANCE

(2) GENERAL ITEM NUMBER	(3) DESCRIPTION  REFERENCE NUMBER & UNIT CODE	(4) UNIT OF MEAS	(5) QTY REQ'D	(6) BDRY allowance			(7) BDRY allowance			(8) QTY REQ'D EQUIP	(9) QTY REQ'D EQUIP	(10) CLASSIFICATION GROUP & ITEM NO	(11) REFERENCE DESCRIPTION
				(6)			(7)						
				(6) 1.20	(6) 2.40	(6) 3.60	(7) 1.20	(7) 2.40	(7) 3.60				
	WHEEL OIL LUBRICANT Type 42050000	EA									5 - 1		
	GREASE MILWAUKEE 2 (935000)	LB									5 - 2		
	WHEEL OIL LUBRICANT Type 42050000	EA									5 - 3		
	SPINDLE OIL MILWAUKEE 2 (935000)	QT									5 - 4		
	WHEEL OIL LUBRICANT Type 42050000	EA									5 - 5		
	WHEEL OIL LUBRICANT Type 42050000	EA									5 - 6		

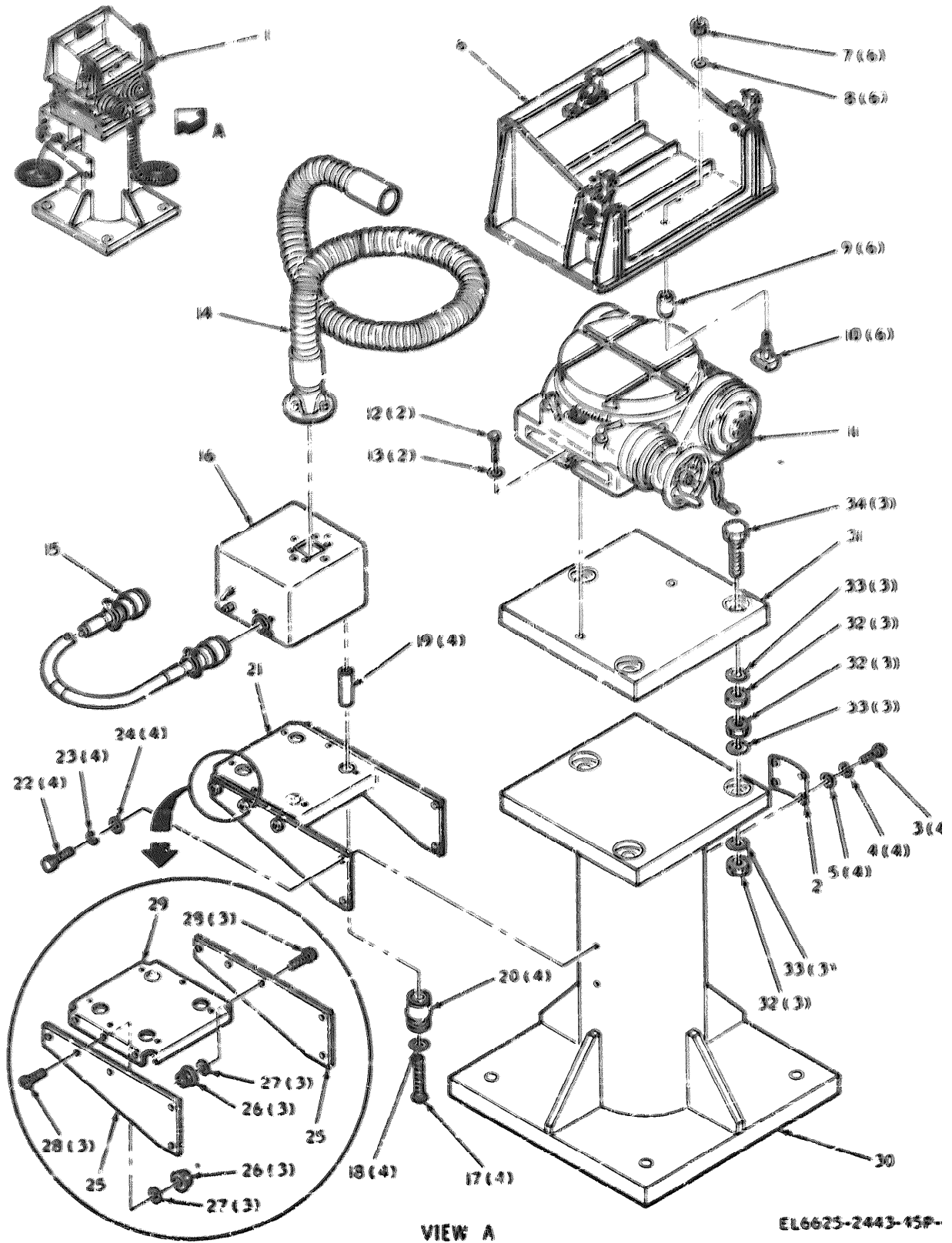


Figure 1. Test Stand, Gyro Stabilized Platform MT-4145/ASN-85

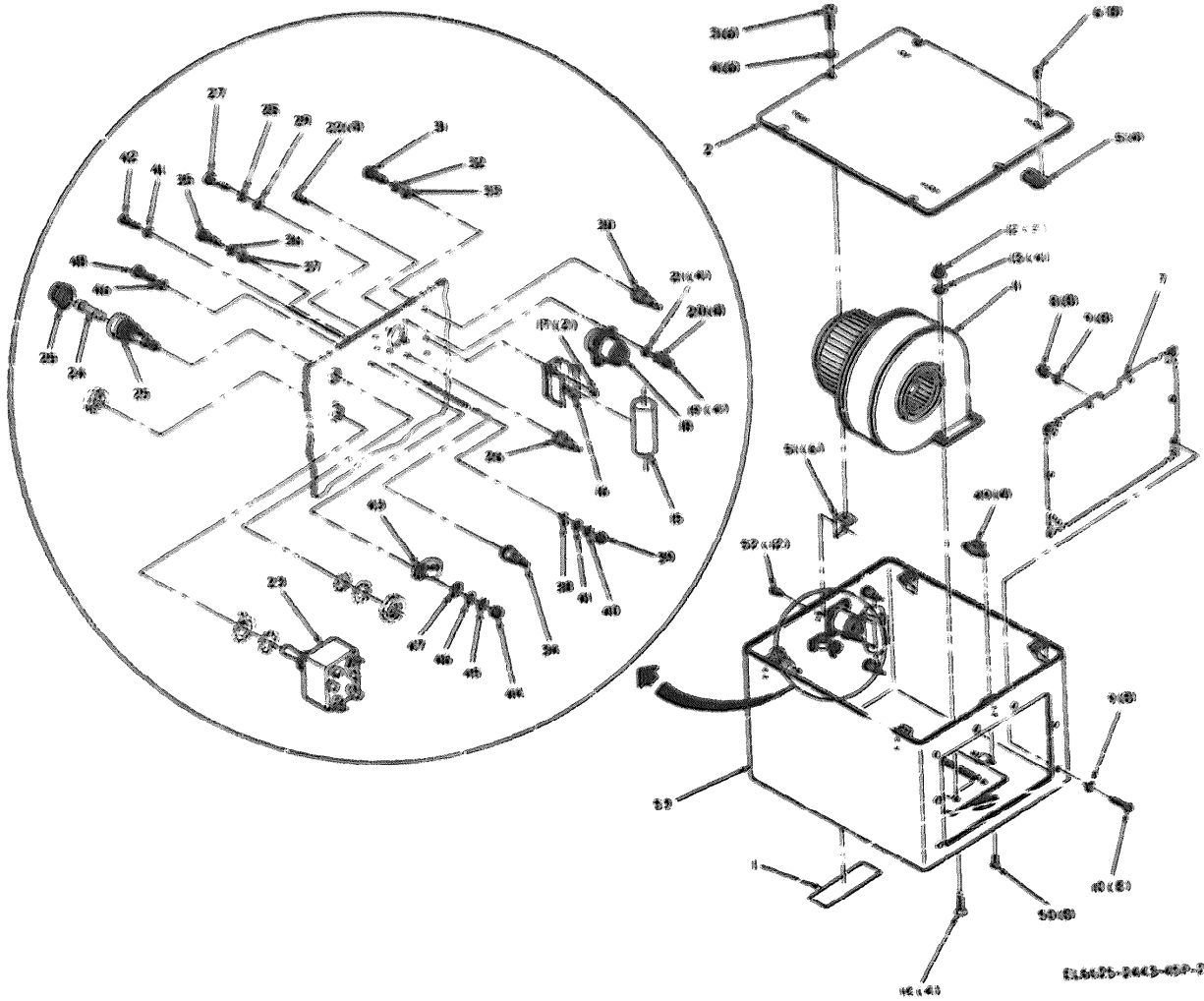
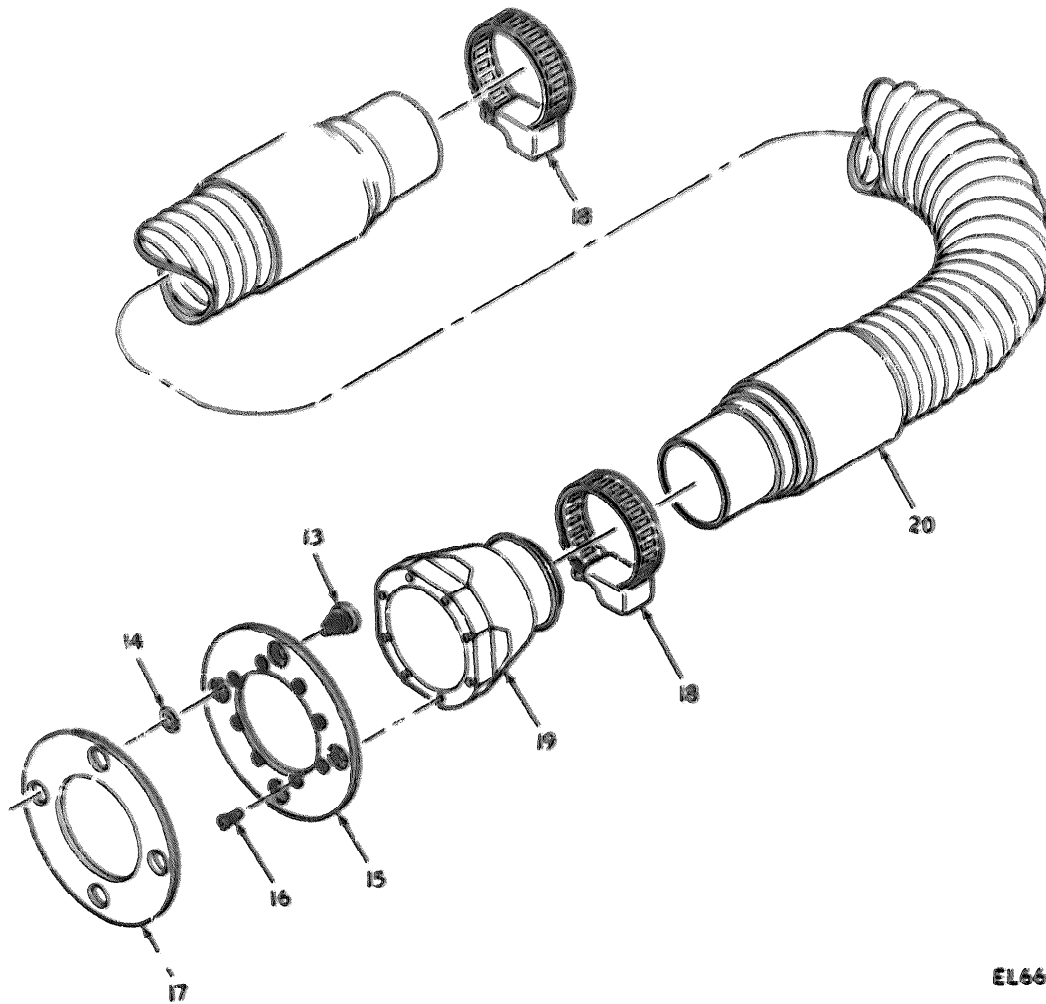
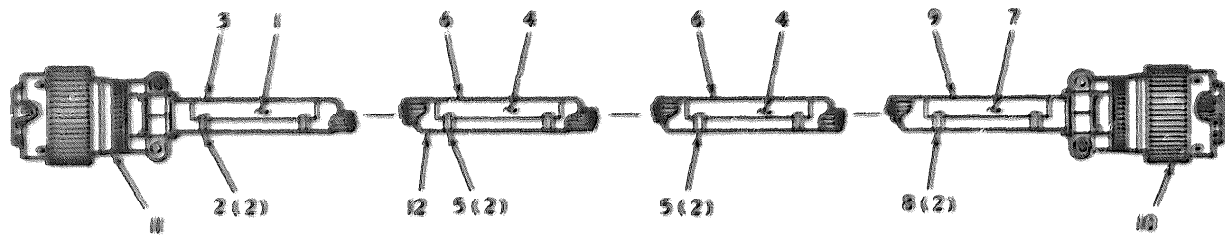


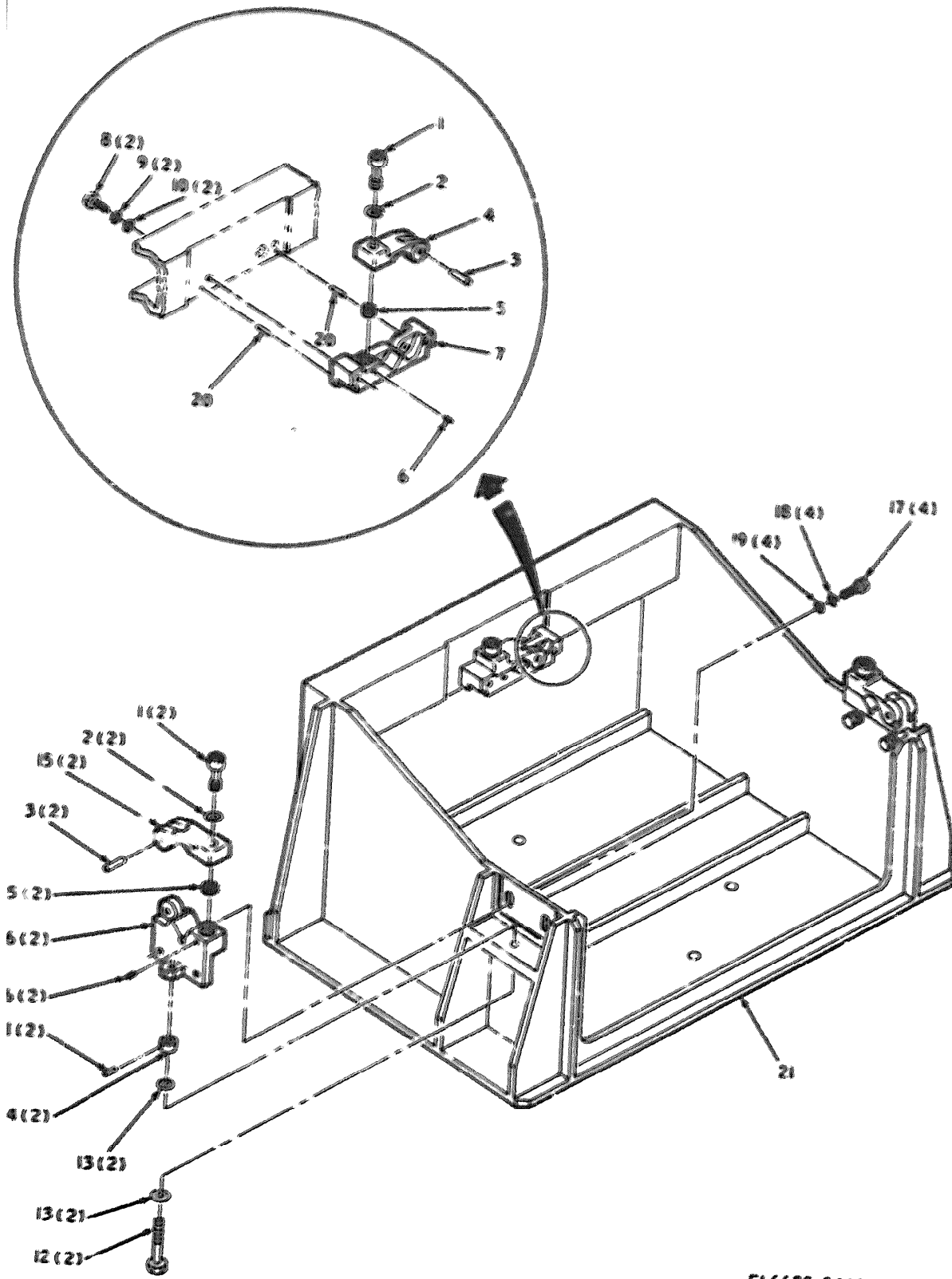
Figure 2. Blower





EL6625-2443-45P-3

Figure 3. Electrical Power Cable Assembly and Flexible Air Hose



EL6625-2443-45P-4

Figure 4. Mounting Fixture

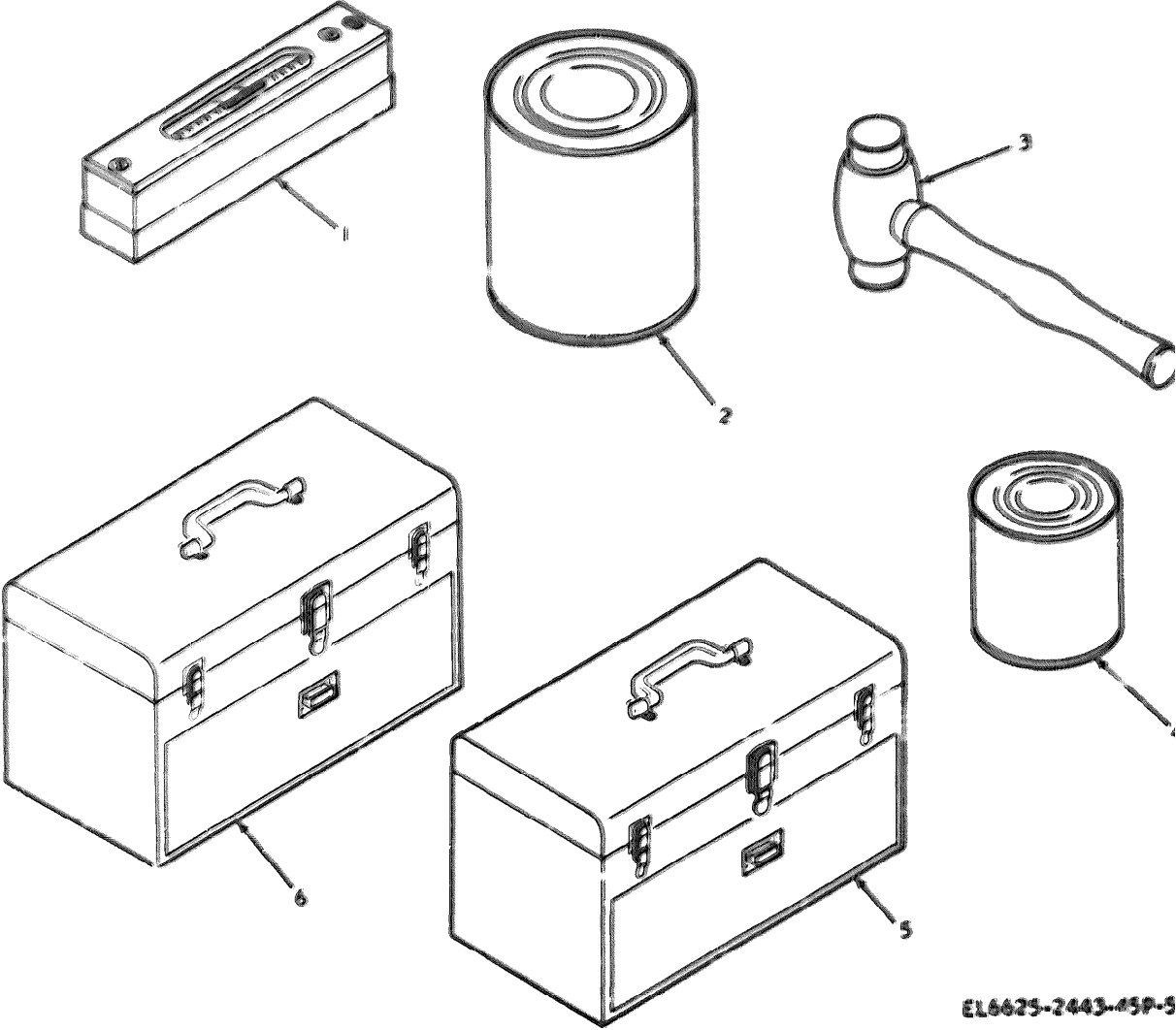


Figure 5. Special Tools, Test and Support Equipment



SECTION IV. INDEX - REFERENCE NUMBER CROSS-REFERENCE TO FIGURE AND ITEM NUMBER

REFERENCE NUMBER	AMG CODE	FIGURE & ITEM NO.	REFERENCE NUMBER	AMG CODE	FIGURE & ITEM NO.	REFERENCE NUMBER	AMG CODE	FIGURE & ITEM NO.
AG44444444	99999	5 - 2	774-0	99730	3 - 2			
AG44444444	99999	1 - 7	774-0	99730	3 - 5			
AG44444444	99999	1 - 33	774-0	99730	3 - 8			
AG44444444	99999	1 - 8	AG700000	99350	5 - 4			
AG44444444	99999	1 - 13	AG700000	99350	3 - 18			
AG44444444	99999	3 - 12	AG700000	99350	2 - 26			
AG44444444	99999	2 - 11	AG700000	99350	2 - 30			
AG44444444	99999	2 - 47	AG700000	99350	2 - 36			
AG44444444	99999	4 - 6	AG700000	99350	3 - 20			
AG44444444	99999	2 - 15	AG700000	99350	2 - 38			
AG44444444	99999	2 - 5	AG700000	99350	1 - 23			
AG44444444	99999	2 - 51	AG700000	99350	1 - 25			
AG44444444	99999	2 - 9	AG700000	99350	1 - 29			
AG44444444	99999	2 - 20	AG700000	99350	4 - 7			
AG44444444	99999	2 - 32	AG700000	99350	4 - 16			
AG44444444	99999	2 - 37	AG700000	99350	4 - 4			
AG44444444	99999	2 - 45	AG700000	99350	4 - 15			
AG44444444	99999	2 - 46	AG700000	99350	4 - 5			
AG44444444	99999	2 - 53	AG700000	99350	4 - 12			
AG44444444	99999	1 - 27	AG700000	99350	4 - 14			
AG44444444	99999	2 - 4	AG700000	99350	1 - 1			
AG44444444	99999	1 - 24	AG700000	99350	2 - 1			
AG44444444	99999	4 - 20	AG700000	99350	3 - 4			
AG44444444	99999	4 - 3	AG700000	99350	3 - 11			
AG44444444	99999	4 - 8	AG700000	99350	3 - 7			
AG44444444	99999	2 - 16	AG700000	99350	1 - 2			
AG44444444	99999	2 - 30	AG700000	99350	1 - 6			
AG44444444	99999	2 - 6	AG700000	99350	4 - 12			
AG44444444	99999	2 - 12	AG700000	99350	1 - 20			
AG44444444	99999	2 - 17	AG700000	99350	1 - 22			
AG44444444	99999	2 - 14	AG700000	99350	1 - 36			
AG44444444	99999	2 - 22	AG700000	99350	1 - 31			
AG44444444	99999	2 - 23	AG700000	99350	1 - 10			
AG44444444	99999	2 - 25	AG700000	99350	1 - 13			
AG44444444	99999	2 - 10	AG700000	99350	1 - 14			
AG44444444	99999	1 - 11	AG700000	99350	3 - 17			
AG44444444	99999	4 - 7	AG700000	99350	1 - 15			
AG44444444	99999	1 - 12	AG700000	99350	3 - 19			
AG44444444	99999	1 - 4	AG700000	99350	1 - 16			
AG44444444	99999	2 - 20	AG700000	99350	1 - 7			
AG44444444	99999	2 - 29	AG700000	99350	2 - 2			
AG44444444	99999	2 - 33	AG700000	99350	2 - 53			
AG44444444	99999	2 - 36	AG700000	99350	1 - 15			
AG44444444	99999	2 - 40	AG700000	99350	1 - 9			
AG44444444	99999	2 - 45	AG700000	99350	3 - 14			
AG44444444	99999	4 - 9	AG700000	99350	3 - 13			
AG44444444	99999	1 - 23	AG700000	99350	2 - 43			
AG44444444	99999	4 - 2	AG700000	99350	2 - 48			
AG44444444	99999	4 - 10	AG700000	99350	2 - 24			
AG44444444	99999	2 - 18	AG700000	99350	2 - 25			
AG44444444	99999	2 - 19	AG700000	99350	1 - 28			
AG44444444	99999	2 - 44	AG700000	99350	1 - 20			
AG44444444	99999	4 - 11	AG700000	99350	1 - 18			
AG44444444	99999	1 - 3	AG700000	99350	4 - 13			
AG44444444	99999	2 - 27	AG700000	99350	5 - 3			
AG44444444	99999	2 - 31	AG700000	99350	3 - 3			
AG44444444	99999	2 - 35	AG700000	99350	3 - 6			
AG44444444	99999	3 - 14	AG700000	99350	3 - 9			
AG44444444	99999	2 - 13	AG700000	99350	1 - 19			
AG44444444	99999	2 - 42	AG700000	99350	4 - 1			
AG44444444	99999	2 - 48	AG700000	99350				
AG44444444	99999	2 - 3	AG700000	99350				
AG44444444	99999	1 - 17	AG700000	99350				
AG44444444	99999	2 - 8	AG700000	99350				
AG44444444	99999	2 - 12	AG700000	99350				
AG44444444	99999	1 - 39	AG700000	99350				
AG44444444	99999	1 - 5	AG700000	99350				
AG44444444	99999	2 - 21	AG700000	99350				
AG44444444	99999	4 - 19	AG700000	99350				
AG44444444	99999	4 - 10	AG700000	99350				
AG44444444	99999	1 - 11	AG700000	99350				
AG44444444	99999	5 - 1	AG700000	99350				
AG44444444	99999	5 - 9	AG700000	99350				
AG44444444	99999	5 - 6	AG700000	99350				

SECTION IV. INDEX - REFERENCE DESIGNATION CROSS-REFERENCE TO INDEX NUMBER

REFERENCE DESIGNATION	INDEX NO.	REFERENCE DESIGNATION	INDEX NO.	REFERENCE DESIGNATION	INDEX NO.
01	40001	01000	40006		
02	40002	01001	40007		
03	40003	01002	40008		
04	40004	01003	40009		
05	40005	01004	40010		
06	40006	01005	40011		
07	40007	01006	40012		
08	40008	01007	40013		
09	40009	01008	40014		
10	40010	01009	40015		
11	40011	01010	40016		
12	40012	01011	40017		
13	40013	01012	40018		
14	40014	01013	40019		
15	40015	01014	40020		
16	40016	01015	40021		
17	40017	01016	40022		
18	40018	01017	40023		
19	40019	01018	40024		
20	40020	01019	40025		
21	40021	01020	40026		
22	40022	01021	40027		
23	40023	01022	40028		
24	40024	01023	40029		
25	40025	01024	40030		
26	40026	01025	40031		
27	40027	01026	40032		
28	40028	01027	40033		
29	40029	01028	40034		
30	40030	01029	40035		
31	40031	01030	40036		
32	40032	01031	40037		
33	40033	01032	40038		
34	40034	01033	40039		
35	40035	01034	40040		
36	40036	01035	40041		
37	40037	01036	40042		
38	40038	01037	40043		
39	40039	01038	40044		
40	40040	01039	40045		
41	40041	01040	40046		
42	40042	01041	40047		
43	40043	01042	40048		
44	40044	01043	40049		
45	40045	01044	40050		
46	40046	01045	40051		
47	40047	01046	40052		
48	40048	01047	40053		
49	40049	01048	40054		
50	40050	01049	40055		
51	40051	01050	40056		
52	40052	01051	40057		
53	40053	01052	40058		
54	40054	01053	40059		
55	40055	01054	40060		
56	40056	01055	40061		
57	40057	01056	40062		
58	40058	01057	40063		
59	40059	01058	40064		
60	40060	01059	40065		
61	40061	01060	40066		
62	40062	01061	40067		
63	40063	01062	40068		
64	40064	01063	40069		
65	40065	01064	40070		
66	40066	01065	40071		
67	40067	01066	40072		
68	40068	01067	40073		
69	40069	01068	40074		
70	40070	01069	40075		
71	40071	01070	40076		
72	40072	01071	40077		
73	40073	01072	40078		
74	40074	01073	40079		
75	40075	01074	40080		
76	40076	01075	40081		
77	40077	01076	40082		
78	40078	01077	40083		
79	40079	01078	40084		
80	40080	01079	40085		
81	40081	01080	40086		
82	40082	01081	40087		
83	40083	01082	40088		
84	40084	01083	40089		
85	40085	01084	40090		
86	40086	01085	40091		
87	40087	01086	40092		
88	40088	01087	40093		
89	40089	01088	40094		
90	40090	01089	40095		
91	40091	01090	40096		
92	40092	01091	40097		
93	40093	01092	40098		
94	40094	01093	40099		
95	40095	01094	40100		
96	40096	01095	40101		
97	40097	01096	40102		
98	40098	01097	40103		
99	40099	01098	40104		
100	40100	01099	40105		

SECTION IV. INDEX - FEDERAL STOCK NUMBER CROSS-REFERENCE TO FIGURE AND ITEM NUMBER

STOCK NUMBER	FIGURE & ITEM NO.	STOCK NUMBER	FIGURE & ITEM NO.	STOCK NUMBER	FIGURE & ITEM NO.
9140	1 - 10	9300-933-0110	2 - 45		
9140	2 - 11	9300-933-0110	4 - 9		
9170	1 - 14	9300-933-0121	1 - 23		
9170	3 - 20	9300-933-0121	4 - 2		
9190	3 - 15	9300-933-0123	4 - 10		
9190	3 - 18	9300-934-9740	2 - 19		
9190	3 - 19	9300-934-9740	2 - 30		
9205	1 - 28	9300-934-9740	2 - 44		
9205	1 - 34	9305-753-3000	4 - 3		
9205	4 - 1	9305-823-1207	4 - 20		
9205	4 - 5	9305-823-9440	4 - 11		
9205	4 - 6	9320-117-6005	2 - 32		
9205	4 - 12	9320-117-6000	2 - 30		
9205-054-5647	1 - 3	9320-204-0672	2 - 6		
9205-054-5647	2 - 27	9320-254-0122	2 - 17		
9205-054-5647	2 - 31	9325	3 - 13		
9205-054-5647	2 - 35	9325-693-1712	2 - 49		
9205-054-5648	1 - 10	9330	3 - 17		
9205-054-5650	2 - 13	9340-060-9020	2 - 16		
9205-054-5650	2 - 42	9340-250-7067	2 - 43		
9205-054-5650	2 - 48	9340-257-0639	4 - 13		
9205-054-6071	2 - 3	9365	1 - 3		
9205-054-6070	1 - 17	9365	1 - 19		
9205-054-9061	2 - 22	9410	2 - 15		
9205-060-7327	2 - 14	9420-200-4101	2 - 23		
9205-060-2020	4 - 17	9420-295-9602	2 - 24		
9205-720-8265	1 - 22	9430-904-9000	2 - 23		
9205-930-0700	1 - 12	9435-760-5001	3 - 11		
9205-910-7604	4 - 8	9435-900-1367	2 - 18		
9206	1 - 10	9435-902-2304	3 - 10		
9210	1 - 18	9440	2 - 30		
9210	1 - 32	9440-007-5535	2 - 20		
9210	3 - 14	9440-007-5535	2 - 30		
9210	4 - 14	9440-007-5535	2 - 34		
9210	1 - 5	9475	3 - 1		
9210-057-0573	4 - 10	9475	3 - 2		
9210-064-5291	1 - 8	9475	3 - 3		
9210-107-0004	1 - 13	9475	3 - 4		
9210-107-0006	1 - 33	9475	3 - 5		
9210-251-0000	1 - 7	9475	3 - 6		
9210-279-0571	1 - 24	9475	3 - 7		
9210-282-5677	2 - 5	9475	3 - 8		
9210-455-7513	2 - 47	9475	3 - 9		
9210-472-2170	2 - 21	6145	3 - 12		
9210-723-9670	4 - 19	6150	1 - 15		
9210-744-9544	2 - 9	6605	1 - 6		
9210-782-1349	2 - 20	6605	1 - 11		
9210-782-1349	2 - 32	6605	1 - 20		
9210-782-1349	2 - 37	6605	1 - 21		
9210-782-1349	2 - 41	6605	1 - 25		
9210-782-1349	2 - 46	6605	1 - 29		
9210-845-2399	1 - 8	6605	1 - 30		
9210-845-3030	1 - 20	6605	1 - 31		
9210-870-9510	2 - 12	6605	2 - 2		
9210-880-5976	2 - 13	6605	2 - 7		
9210-880-5970	1 - 27	6605	2 - 13		
9210-880-5970	2 - 4	6605	4 - 4		
9210-893-2724	2 - 31	6605	4 - 7		
9210-933-0110	1 - 4	6605	4 - 15		
9210-933-0110	2 - 20	6605	4 - 16		
9210-933-0110	2 - 29	6605	4 - 21		
9210-933-0110	2 - 33	6605-522-3740	1 - 1		
9210-933-0110	2 - 36	9905	1 - 2		
9210-933-0110	2 - 40	9905	2 - 1		

SECTION V. INDEX AND ITEM NUMBER CROSS-REFERENCE TO INDEX NUMBER

FIG. NO.	FIG. NO. OR REFERENCE DESIGNATION	INDEX NO.	FIG. NO.	FIG. NO. OR REFERENCE DESIGNATION	INDEX NO.
1	1	4011	2	41	4041
1	2	4012	2	42	4042
1	3	4013	2	43	4043
1	4	4014	2	44	4044
1	5	4015	2	45	4045
1	6	4016	2	46	4046
1	7	4017	2	47	4047
1	8	4018	2	48	4048
1	9	4019	2	49	4049
1	10	4020	2	50	4050
1	11	4021	2	51	4051
1	12	4022	2	52	4052
1	13	4023	2	53	4053
1	14	4024	3	1	4054
1	15	4025	3	2	4055
1	16	4026	3	3	4056
1	17	4027	3	4	4057
1	18	4028	3	5	4058
1	19	4029	3	6	4059
1	20	4030	3	7	4060
1	21	4031	3	8	4061
1	22	4032	3	9	4062
1	23	4033	3	10	4063
1	24	4034	3	11	4064
1	25	4035	3	12	4065
1	26	4036	3	13	4066
1	27	4037	3	14	4067
1	28	4038	3	15	4068
1	29	4039	3	16	4069
1	30	4040	3	17	4070
1	31	4041	3	18	4071
1	32	4042	3	19	4072
1	33	4043	3	20	4073
1	34	4044	3	21	4074
2	1	4045	4	2	4075
2	2	4046	4	3	4076
2	3	4047	4	4	4077
2	4	4048	4	5	4078
2	5	4049	4	6	4079
2	6	4050	4	7	4080
2	7	4051	4	8	4081
2	8	4052	4	9	4082
2	9	4053	4	10	4083
2	10	4054	4	11	4084
2	11	4055	4	12	4085
2	12	4056	4	13	4086
2	13	4057	4	14	4087
2	14	4058	4	15	4088
2	15	4059	4	16	4089
2	16	4060	4	17	4090
2	17	4061	4	18	4091
2	18	4062	4	19	4092
2	19	4063	4	20	4093
2	20	4064	4	21	4094
2	21	4065	5	1	4095
2	22	4066	5	2	4096
2	23	4067	5	3	4097
2	24	4068	5	4	4098
2	25	4069	5	5	4099
2	26	4070	5	6	4100
2	27	4071			
2	28	4072			
2	29	4073			
2	30	4074			
2	31	4075			
2	32	4076			
2	33	4077			
2	34	4078			
2	35	4079			
2	36	4080			
2	37	4081			
2	38	4082			
2	39	4083			
2	40	4084			
2	41	4085			



By the Order of the Secretary of the Army:

**W. C. WESTMORELAND,**  
*General, United States Army,*  
*Chief of Staff.*

Official:

**VERNE L. BOWERS,**  
*Major General, United States Army,*  
*The Adjutant General.*

Distribution:

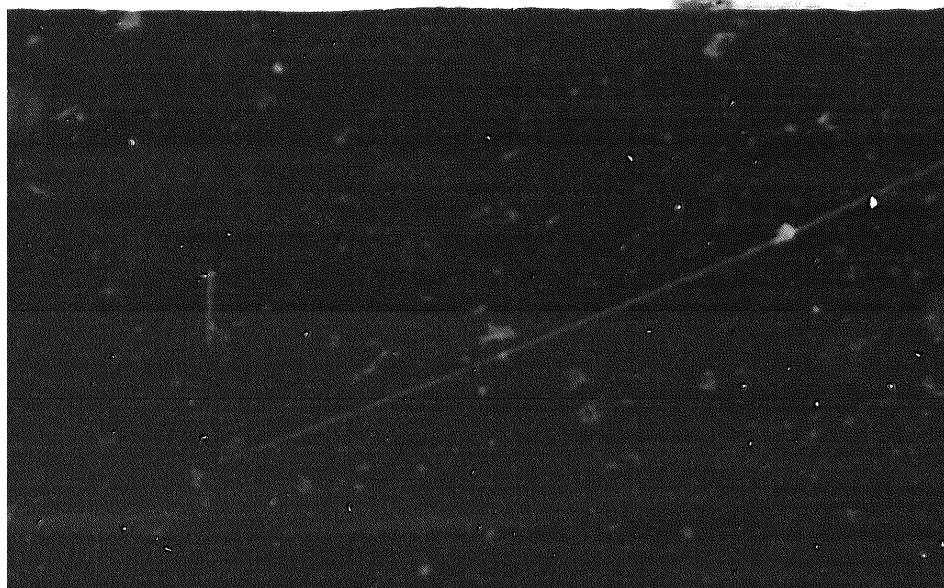
To be distributed in accordance with DA Form 21-31, direct and general support maintenance requirements for OV-10 and U-21 aircraft.

**END**

9-18-83

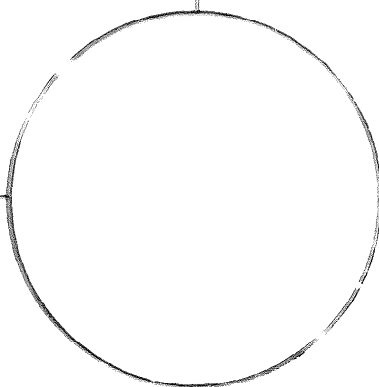
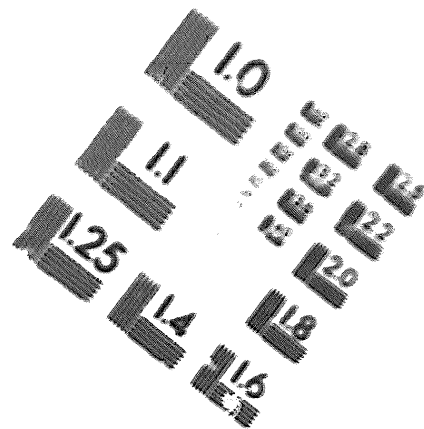
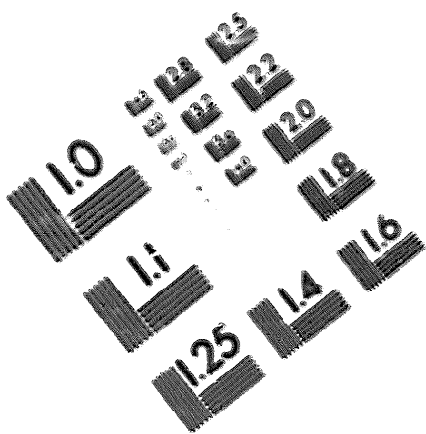
**DATE**





DEPARTMENT OF THE ARMY

MICROFORM  
TEST TARGET



150 MM

150 mm (ø = 61 mm)

ABCDEFGHIJKLMN OPQRSTUVWXYZ 1234567890  
abcdefghijklmnopqrstuvwxyz %&'()\*+,-./:;<=>?@

1.5 mm (ø = 1.09 mm)

ABCDEFGHIJKLMN OPQRSTUVWXYZ 1234567890  
abcdefghijklmnopqrstuvwxyz %&'()\*+,-./:;<=>?@

2.0 mm (ø = 1.37 mm)

ABCDEFGHIJKLMN OPQRSTUVWXYZ  
abcdefghijklmnopqrstuvwxyz  
1234567890 \$%&'()\*+,-./:;<=>?@

2.5 mm (ø = 1.77 mm)

ABCDEFGHIJKLMN OPQRSTUVWXYZ  
abcdefghijklmnopqrstuvwxyz  
1234567890 \$%&'()\*+,-./:;<=>?@

150 mm (ø = 61 mm)

ABCDEFGHIJKLMN OPQRSTUVWXYZ 1234567890  
abcdefghijklmnopqrstuvwxyz %&'()\*+,-./:;<=>?@

1.5 mm (ø = 1.09 mm)

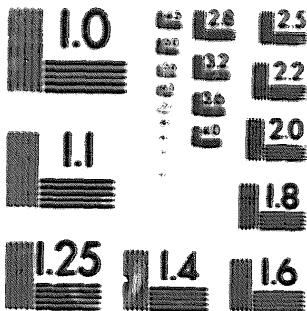
ABCDEFGHIJKLMN OPQRSTUVWXYZ 1234567890  
abcdefghijklmnopqrstuvwxyz %&'()\*+,-./:;<=>?@

2.0 mm (ø = 1.37 mm)

ABCDEFGHIJKLMN OPQRSTUVWXYZ  
abcdefghijklmnopqrstuvwxyz  
1234567890 \$%&'()\*+,-./:;<=>?@

2.5 mm (ø = 1.77 mm)

ABCDEFGHIJKLMN OPQRSTUVWXYZ  
abcdefghijklmnopqrstuvwxyz  
1234567890 \$%&'()\*+,-./:;<=>?@



200 MM



250 MM

